

# A CTO's Introductory Guide to Meta Quest headsets and Microsoft Mesh



# As a CTO what context do you need to be aware of?

1. Microsoft and Meta – Growing Partnership
2. Microsoft and Meta – Latest product upgrades
3. What is now achievable?
4. Quest 3S scalable pricing
5. How to deploy



# Microsoft and Meta

In today's rapidly evolving workplace, organisations are faced with the challenge of driving collaboration and engagement in a hybrid environment. The **partnership** between **Microsoft and Meta**, initiated in **2021**, marks a significant turning point for immersive technology in the enterprise world. By leveraging Azure Cloud and integrating Microsoft Mesh into Meta Quest devices, this collaboration has unlocked new possibilities for 3D immersive meetings and enhanced productivity..

A key milestone in **July 2024** saw Mesh seamlessly integrated into Microsoft Teams, eliminating previous technical barriers and enabling widespread adoption. As CTOs, the opportunity to lead this technological upgrade—from 2D Teams to 3D Mesh—presents a unique chance to reduce commuting, elevate employee engagement, and significantly reduce the company's carbon footprint. With the recent release of the affordable Meta Quest 3S and exciting new features like whiteboarding coming in November 2024, now is the time to embrace this human technology upgrade and drive meaningful change across your organisation.



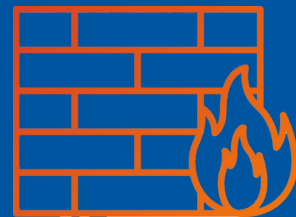
Download the [Mesh Technical Guide here](#)

# Microsoft and Mesh – Partnership

Microsoft and Meta initiated their partnership in **2021** when Meta began leveraging Azure Cloud, marking a vital step towards enterprise integration with Azure's performance and security capabilities. Meta hosted its first OpenAI Llama model on Azure, further solidifying this collaboration.

The partnership expanded with Microsoft's integration of Mesh into the Meta Quest, establishing Microsoft Mesh as the 3D immersive meetings solution.

Firewall Headaches  
now removed



A key milestone occurred in July 2024

when Mesh was integrated into the Teams communication infrastructure. This strategic move eliminated the enterprise firewall barrier, enabling widespread adoption; now, all Teams users can seamlessly access Mesh without requiring any firewall modifications.

This change positions organisations for enhanced collaboration and productivity in a hybrid work environment.



Download the [Mesh Technical Guide here](#)

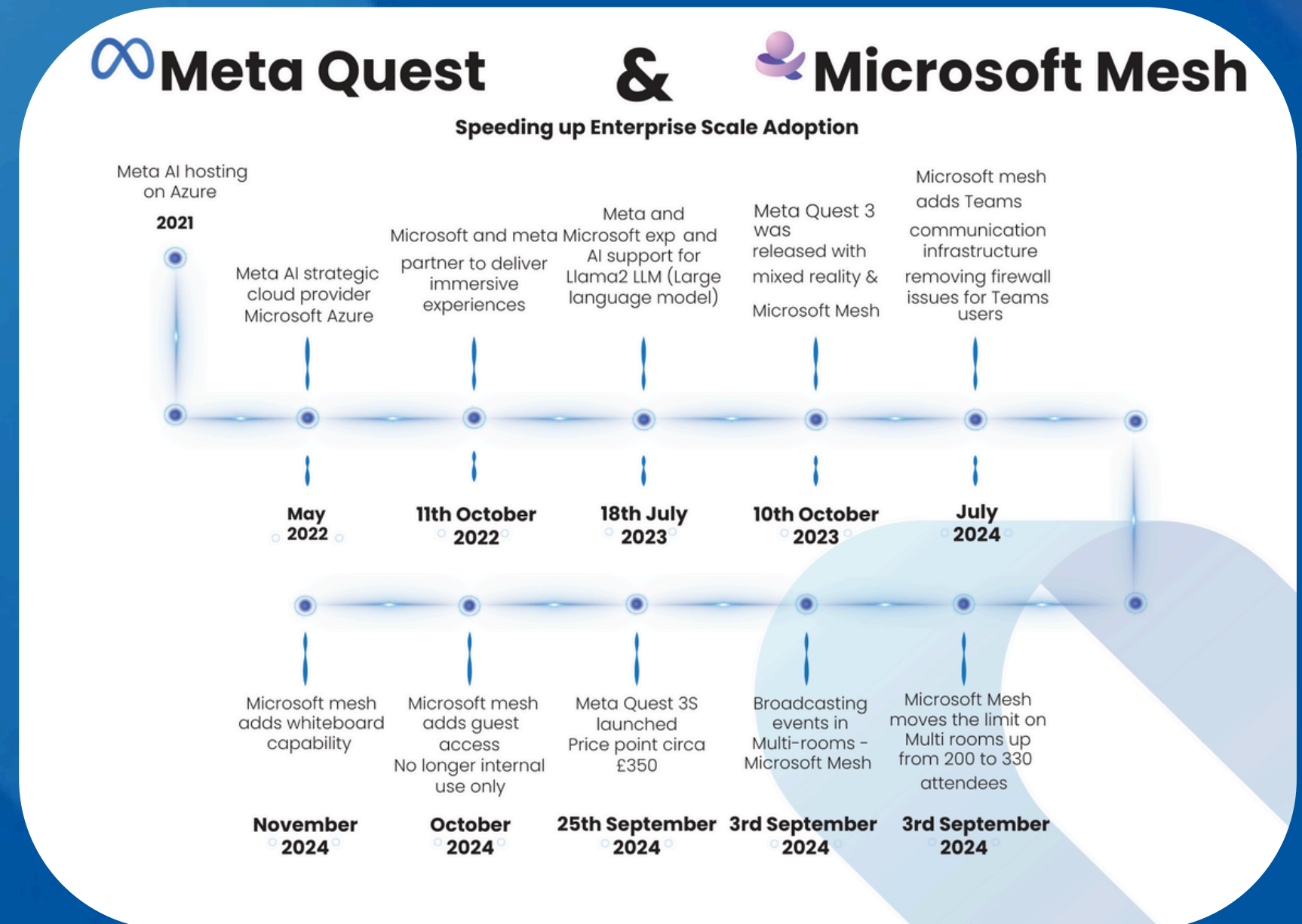
# Microsoft and Meta

Recently, Mesh has gained access to the Quest platform; however, it's important to note that full federation is not yet in place. Currently, inviting guests still requires IT admin support, as outlined in the downloadable PDF.

For large events, the attendee limit for multi-room events was increased from **200** to **330** in **September**, along with the capability for a single master host to broadcast across multiple rooms.

Meta has also introduced the Quest 3S, featuring more affordable lenses than its predecessor, the Quest 3, and offering a three-year warranty. This makes the device more accessible, as it is priced lower than an iPhone and can effectively reduce the need for multiple screens on a desk.

Looking ahead to **November 2024**, workers can enhance collaborative efforts with the introduction of whiteboarding functionality in Mesh, further improving teamwork and productivity.

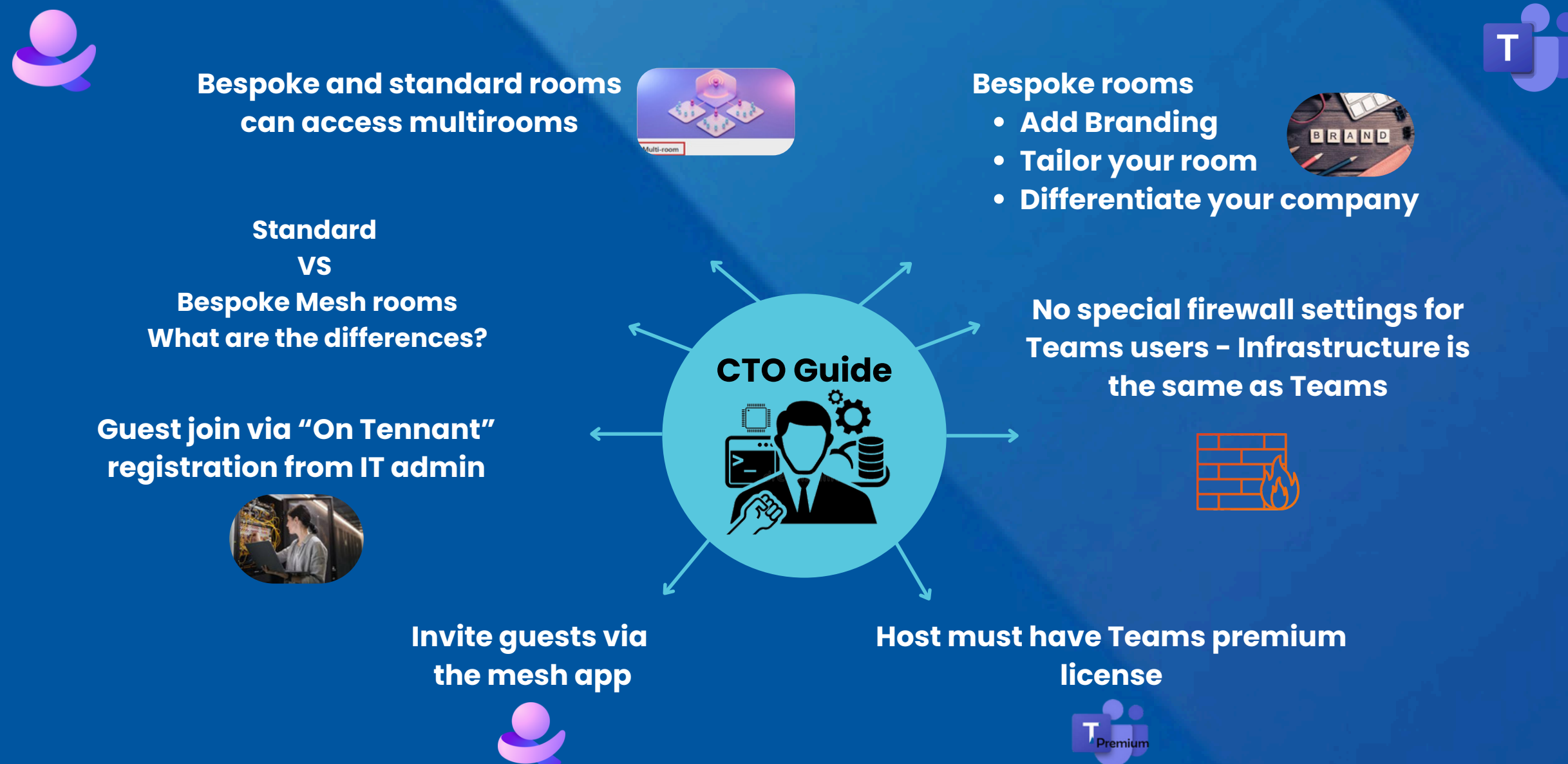


Download the [Mesh Technical Guide here](#)

Microsoft is evolving fast although there are numerous “quirks” that you need to be aware of which is why the downloadable PDF exists as a fluid working document to keep you as a CTO abreast of these quirks, announcements and releases.

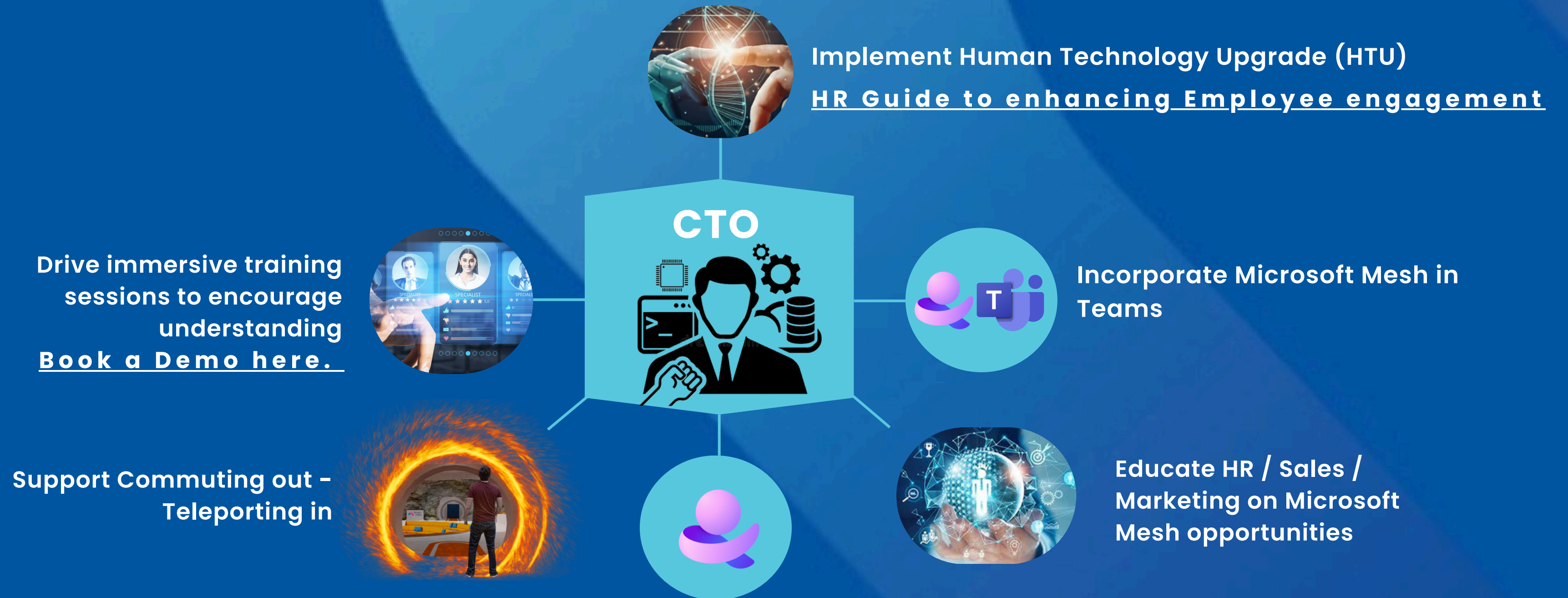
We are part of Microsoft’s TAP programme (Technology Adoption Program), therefore we get early knowledge and insight into developments as Microsoft Mesh scales. We also have Unity developers that bespoke Mesh Rooms into custom environments to amplify the three-dimensional impact.

**We are happy to demonstrate these at any time - [book here.](#)**



**Download the [Mesh Technical Guide here](#)**

# As CTO what can you do to drive your companies upgrade ?



**Champion new Microsoft Mesh upgrades,  
Guest access and whiteboarding & studio**



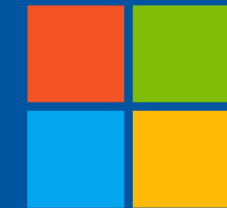
**Download the [Mesh Technical Guide here](#)**

# Microsoft and Meta

As a Chief Technology Officer (CTO), you hold a pivotal role in shaping the future of your organisation through the adoption of innovative technologies. One of the most transformative opportunities available today is the Human Technology upgrade enabled by immersive meetings with Meta Quest and Microsoft Mesh. This upgrade transcends traditional communication methods, allowing your teams to engage in immersive, 3D environments that foster collaboration and creativity.

By implementing immersive training sessions as part of our Meta & Mesh programs, you can elevate your workforce's skills and knowledge in a way that conventional training methods cannot match. These sessions not only enhance learning experiences but also promote deeper connections among team members, leading to improved teamwork and problem-solving capabilities.

[Book a Demo here.](#)



Download the [Mesh Technical Guide here](#)



# Microsoft and Meta



Championing the adoption of new technologies within your organisation is a unique opportunity to lead visible initiatives that have both business and personal impact. As you advocate for the integration of Meta Quest and Mesh, you set a precedent for innovation and progress. This forward-thinking approach not only positions your organisation as a leader in the industry but also empowers your employees to thrive in a modern work environment.

Your leadership in this initiative can inspire a cultural shift towards embracing technology as a tool for enhanced engagement and productivity. By actively promoting the benefits of immersive meetings and training, you create an environment where employees feel valued and connected, ultimately driving the success of your organisation in an increasingly competitive landscape.



Download the [Mesh Technical Guide here](#)

# Microsoft and Meta

Championing the adoption of new technologies within your organisation is a unique opportunity to lead visible initiatives that have both business and personal impact. As you advocate for the integration of Meta Quest and Mesh, you set a precedent for innovation and progress. This forward-thinking approach not only positions your organisation as a leader in the industry but also empowers your employees to thrive in a modern work environment.

We are happy to support this education with a Q & A demo – [Book here](#)



**However the key is to own the technical upgrading of 2D Teams to 3D Mesh.**



Your leadership in this initiative can inspire a cultural shift towards embracing technology as a tool for enhanced engagement and productivity. By actively promoting the benefits of immersive meetings and training, you create an environment where employees feel valued and connected, ultimately driving the success of your organisation in an increasingly competitive landscape.

# Microsoft and Meta

**In conclusion**, as the landscape of work continues to evolve, the integration of immersive technology through Meta Quest and Microsoft Mesh presents a remarkable opportunity for CTOs to lead their organisations into a new era of collaboration and engagement.

Seize the opportunity to be a catalyst for transformation. Embrace the power of immersive meetings and take bold steps toward shaping a workplace where technology enhances human potential. Together, let's redefine what's possible in the modern work environment, creating a thriving ecosystem that benefits your organisation, your employees, and the planet. The future is here, and it's time to step into it.

## Drive better human Outcomes with the impact of Technology



### Addresses the "Worth it" going to the office decision

- ↳ Teleport to office
- ↳ Impacts commuters, hybrid workers, remote workers

### Welcome in teleporting with 3D Microsoft Mesh and Meta headsets

- ↳ Commuting Out
- ↳ Teleporting in



### Widespread Impact

#### Communication

- ↳ 3D Town Hall
- ↳ 3D Coffee Room
- ↳ 3D Project Room

#### Induction

- ↳ 3D Mesh Room
- ↳ Induction Room

#### Interactive Training

- ↳ Higher attention and absorption / training retention rates



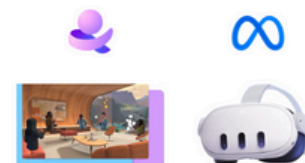
### Cuts Travel Expense

- ↳ Cuts Carbon Footprint
- ↳ Improves employee wellbeing



### Time for Healthy activities and wellbeing can be taken from Travel or commute time

### Replace 2D Teams / Zoom Exhaustion with 3D Immersive Meetings



Microsoft Mesh

Meta Quest





**Download your Technical Guide here**

**[Mesh Technical Guide](#)**

We will update the document whenever we spot a significant change in Microsoft Mesh or the Meta and Microsoft partnership

(Our Technology Adoption Programme Membership (TAP) gives us advanced knowledge of the changes so we can flag these to you)

